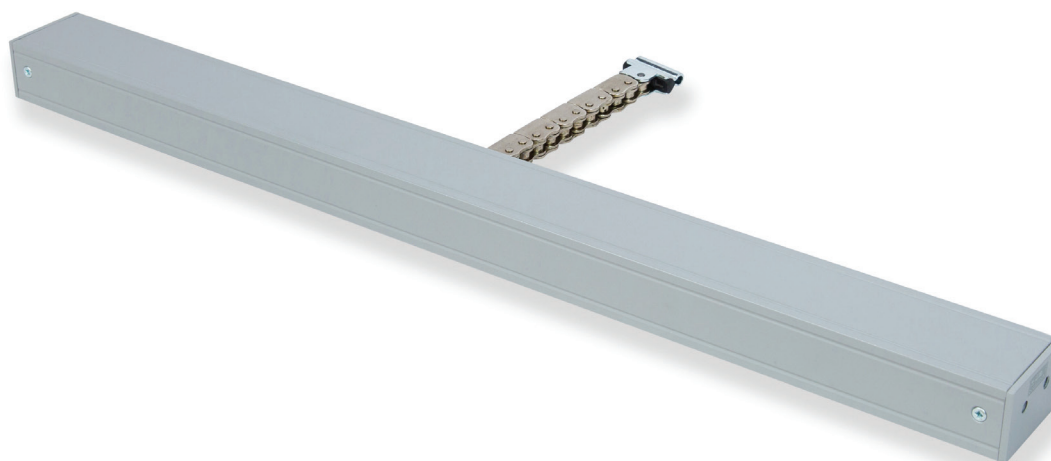


SECO N 25

Stroke 250, 350mm



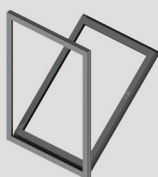
Chain Actuator / 230V ac / 250N

The SECO N 25 is a certified and compliant Chain Actuator designed to provide precise and reliable operation for Environmental Ventilation applications.

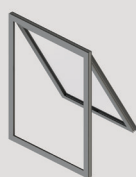
SE Controls manufacture this high-quality 'Made in Britain' actuator with the following features:

- 'Frequency of operation' data logging records every actuator movement
- Compact design with variable options for stroke length
- Standard finish is Grey RAL 9006, can be customised to suit requirements
- Standard flex length is 2m but this can be modified to suit installation requirements
- Extensive range of brackets to suit a variety of window systems
- Quiet operation with configurable speed control

Orientation



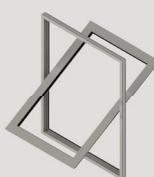
Bottom Hung



Top Hung



Side Hung



Centre Pivot

Accreditations



Applications

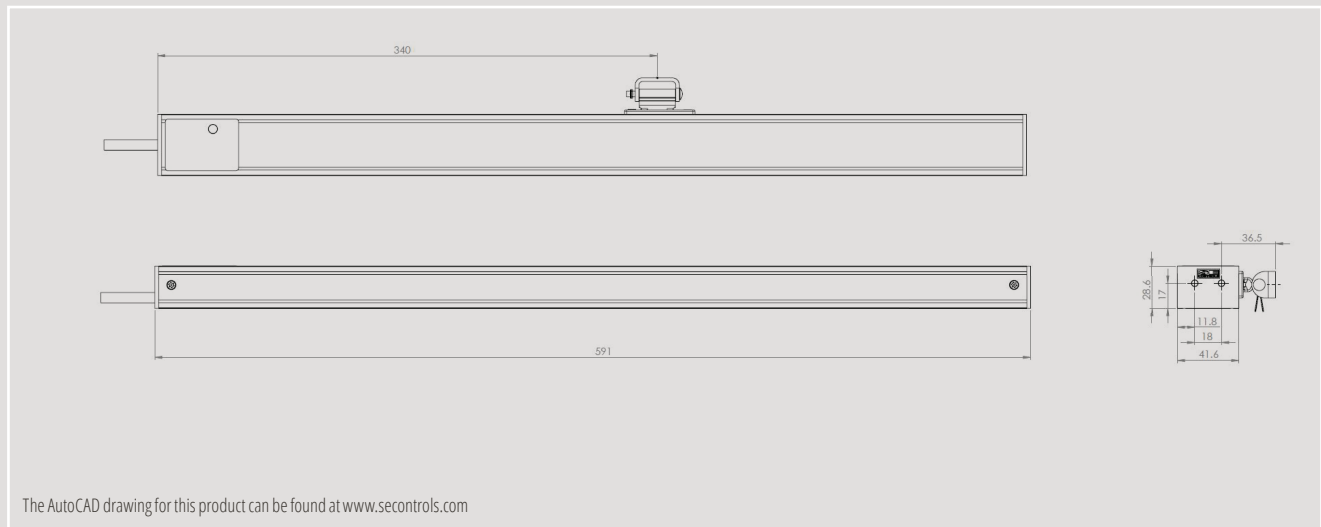


Environmental Ventilation

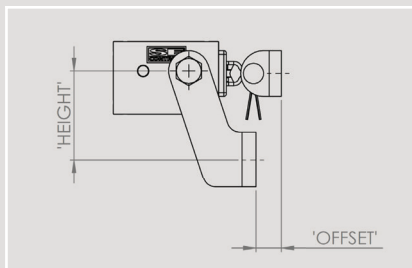


Voltage to 230V chain actuators must be switched off after each operation with a rest period required between cycles.

Technical Drawing



Standard Bracket Detail



Bracket Product Codes

Offset (mm)	Height (mm)		
	35	40	50
0	AKS18000001	AKS18000002	AKS18000003
5	AKS18050001	AKS18050002	AKS18050003
8	AKS18080001	AKS18080002	AKS18080003
10	AKS18100001	AKS18100002	AKS18100003
15	AKS18150001	AKS18150002	AKS18150003
20	N/A	N/A	AKS18200003

Technical Data

Actuator	SECO N 25
Actuator Type	230V ac Chain Opener
Voltage (all +/-6%)	230V ac
Current Draw (Amp)	<0.12A
Stroke	250mm, 350mm (configurable)
Operating Speed	5mm/sec (configurable) 3mm/sec (option single application only)
Ambient Operating Temp.	-5°C +60°C
Thrust Force	250N
Close Force	250N
Soft Close	Yes
Switching	Electronic
Standard Finish	Powder coated Grey (RAL 9006)
Seal Relief	Programmable up to 20mm
Clamping Force	4000N
Flex Length	2m
Flex Type	4 core PVC
Flex Colour	Grey
Product Warranty	15,000 cycles
Duty Cycle	22% (2 min on, 7 min off)
IP Rating	IP20
Brackets	Face fix, Through body, Pivot
Application	Environmental Ventilation

Product Codes

Silver Grey (RAL 9006)	Operating Voltage	Force	Stroke
DAS0250250S	230V ac	250N	250mm
DAS0250350S	230V ac	250N	350mm